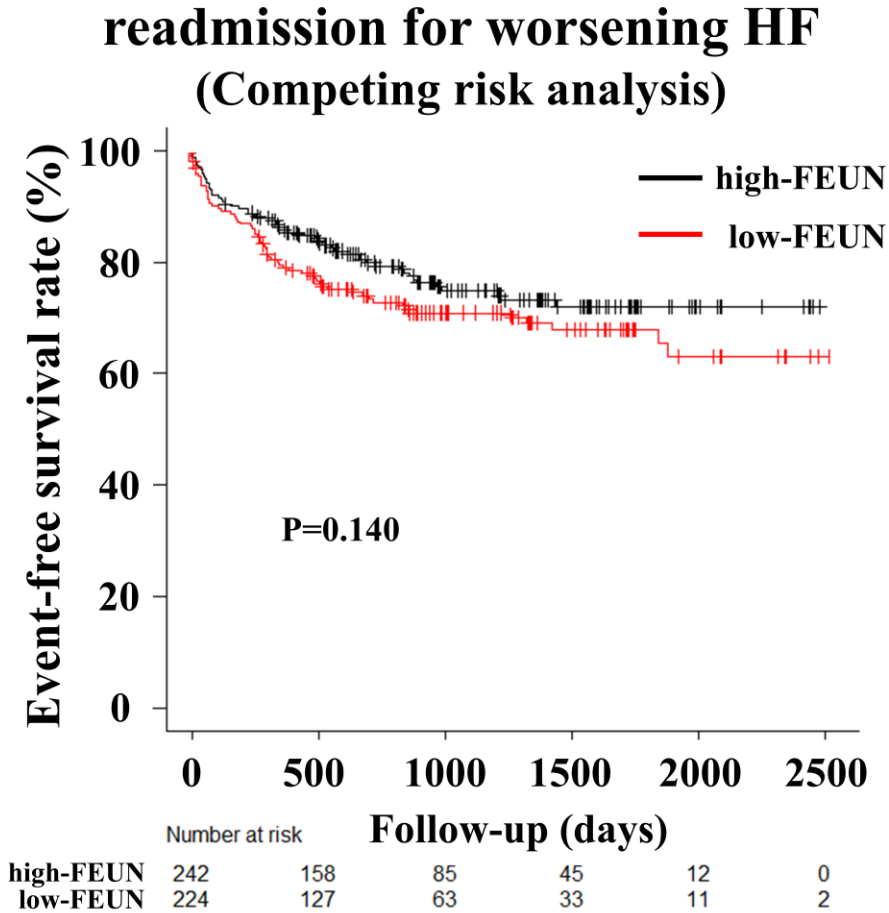


SUPPLEMENTAL MATERIAL

Figure S1. Kaplan–Meier analyses of FEUN at discharge for readmission for worsening HF without death (Competing risk analysis).



Kaplan-Meier survival curves show time to HF readmission in the FEUN<35% and FEUN equal to or greater than 35% groups in a competing-risk analysis (Gray test, P=0.140).